



GAT MONTHLY MEMBERSHIP PROGRESS REPORT

Results as of: 7/31/2022

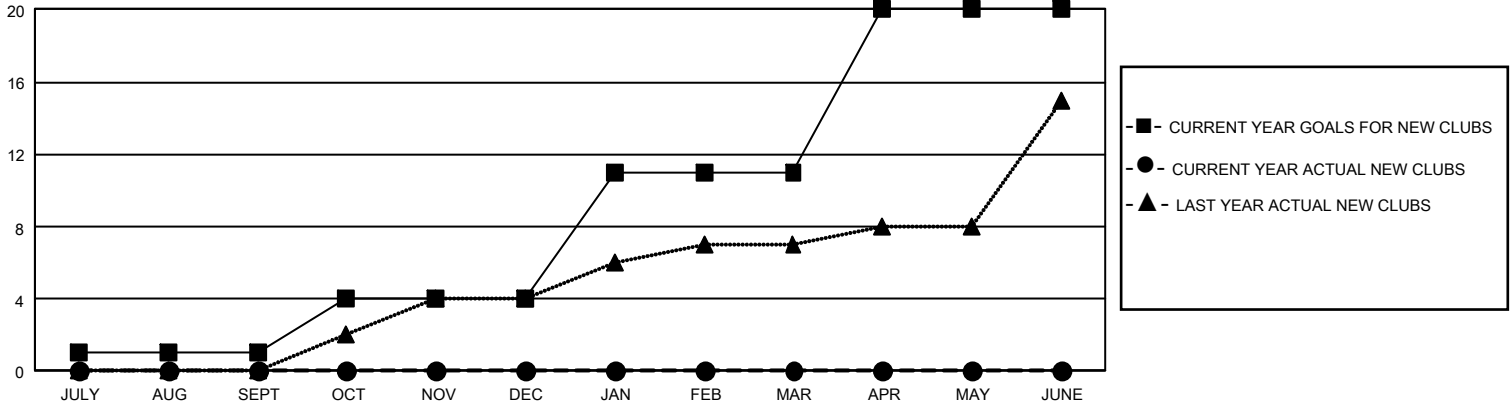
GMT Constitutional Area 3, Group H

REPORT DOES NOT INCLUDE CLUBS IN UNDISTRICTED AREAS.

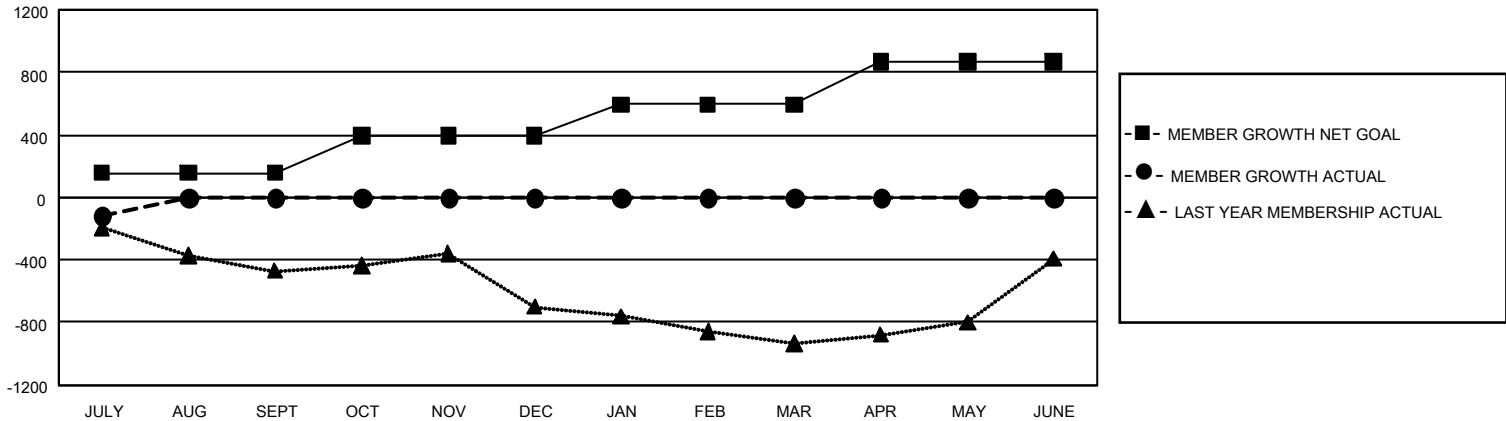
Clubs			
RESULTS FOR 2022-2023			
QUARTER	NEW CLUB GOAL	NEW CLUBS	DROPPED CLUBS
JULY/AUG/SEPT	3	0	1
OCT/NOV/DEC	9	0	0
JAN/FEB/MAR	21	0	0
APR/MAY/JUNE	27	0	0

Members			
RESULTS FOR 2022-2023			
QUARTER	MEMBER GROWTH NET GOAL	MEMBER GROWTH ACTUAL	DROPPED MEMBERS ACTUAL (including transfers)
JULY/AUG/SEPT	155	75	181
OCT/NOV/DEC	240	0	0
JAN/FEB/MAR	200	0	0
APR/MAY/JUNE	275	0	0

GOALS AND ACTUAL NEW CLUBS CUMULATIVE



GOALS AND ACTUAL MEMBERS CUMULATIVE



DROPPED CLUBS: 1 DROPPED MEMBERS DECEASED 8 CLUB CANCELLED 0 OTHER 173 TOTAL 181	29 CLUBS OF 489 ADDED 1 OR MORE NEW MEMBERS	GENDER DISTRIBUTION MALE 7,301 (49.80%) FEMALE 7,353 (50.15%) NON BINARY 0 (0.00%) PREFER NOT TO ANSWER 7 (0.05%)
	CLICK HERE FOR CUMULATIVE MEMBERSHIP DATA	TOTAL FAMILY UNIT MEMBERS 7,613 FAMILY MEMBERS PAYING HALF DUES 3,890